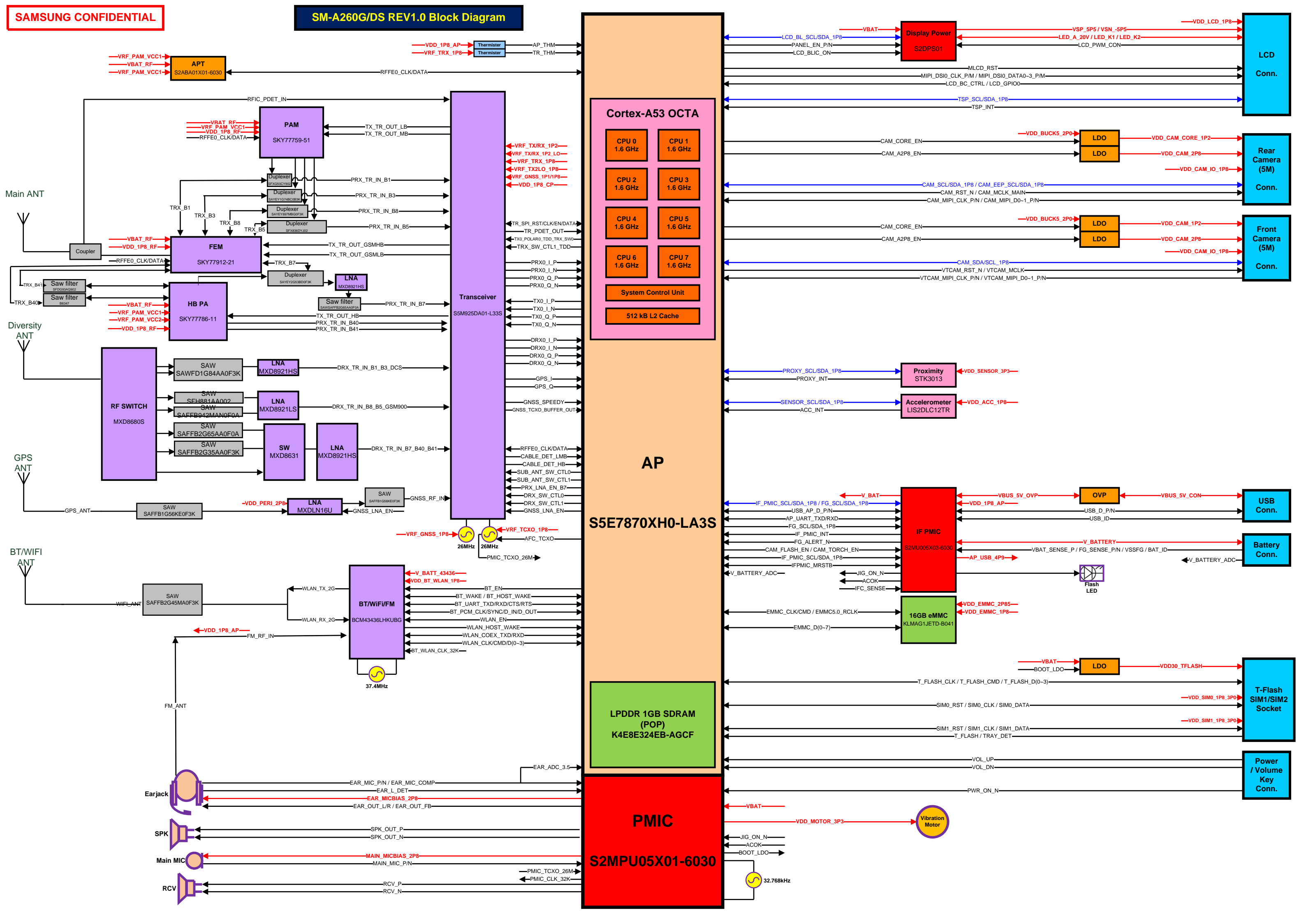


SM-A260F





Cortex-A53 OCTA

- CPU 0 1.6 GHz
- CPU 1 1.6 GHz
- CPU 2 1.6 GHz
- CPU 3 1.6 GHz
- CPU 4 1.6 GHz
- CPU 5 1.6 GHz
- CPU 6 1.6 GHz
- CPU 7 1.6 GHz
- System Control Unit
- 512 kB L2 Cache

AP

S5E7870XH0-LA3S

PMIC

S2MPU05X01-6030

LPDDR 1GB SDRAM (POP)

K4E8E324EB-AGCF

IF PMIC

S2MU005X03-6030

16GB eMMC

KLMAG1JETD-B041

LDO

VDD30_TFLASH

Vibration Motor

LCD Conn.

Rear Camera (5M) Conn.

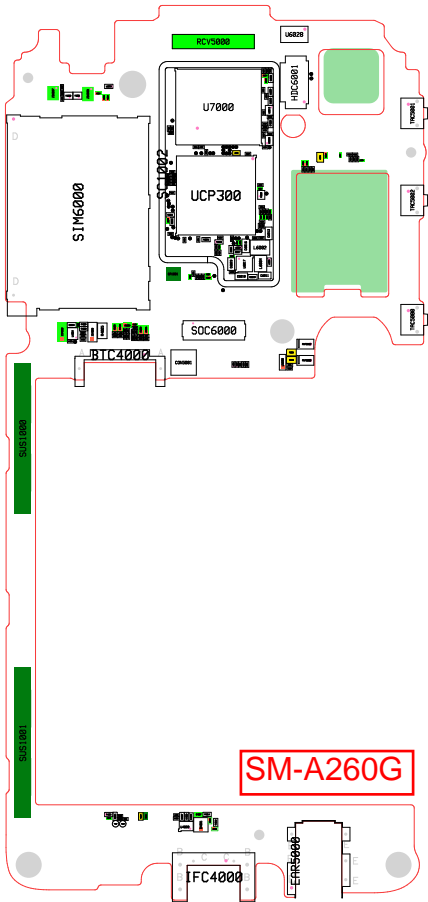
Front Camera (5M) Conn.

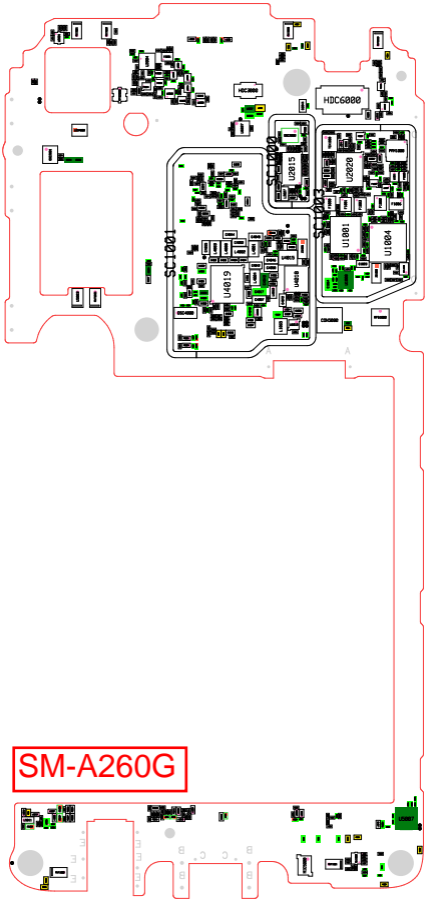
USB Conn.

Battery Conn.

T-Flash SIM1/SIM2 Socket

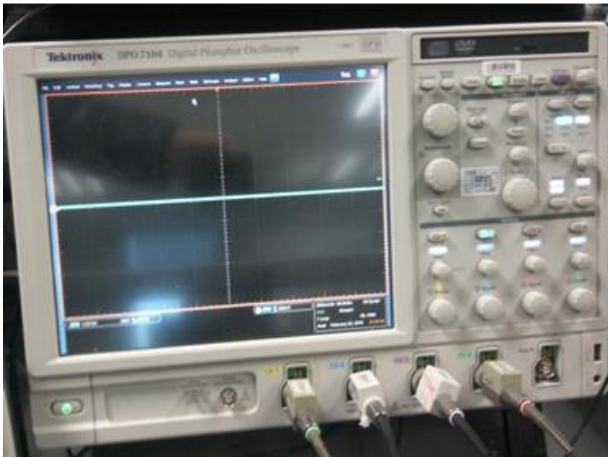
Power / Volume Key Conn.





8. Level 3 Repair

8-3. Flow chart of Troubleshooting.



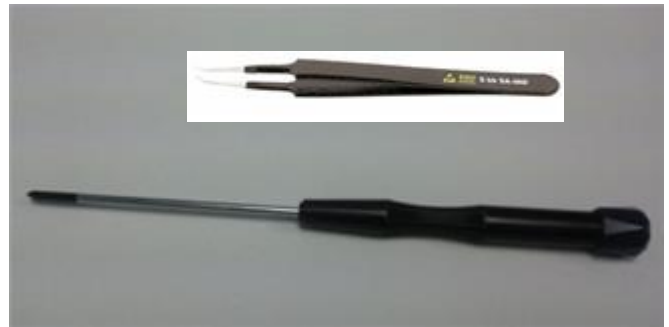
Oscilloscope



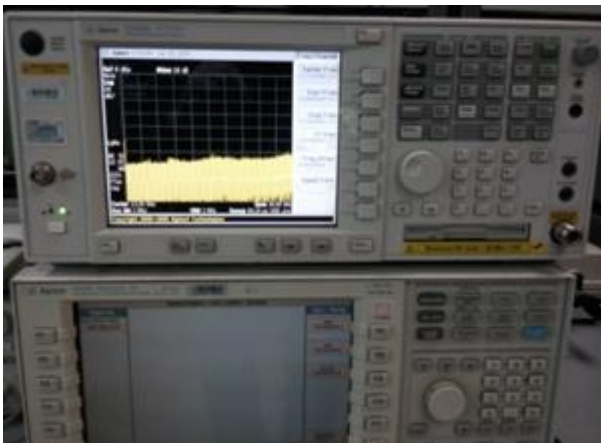
Digital Multimeter



Power Supply



+ driver, ESD Safe Tweezer



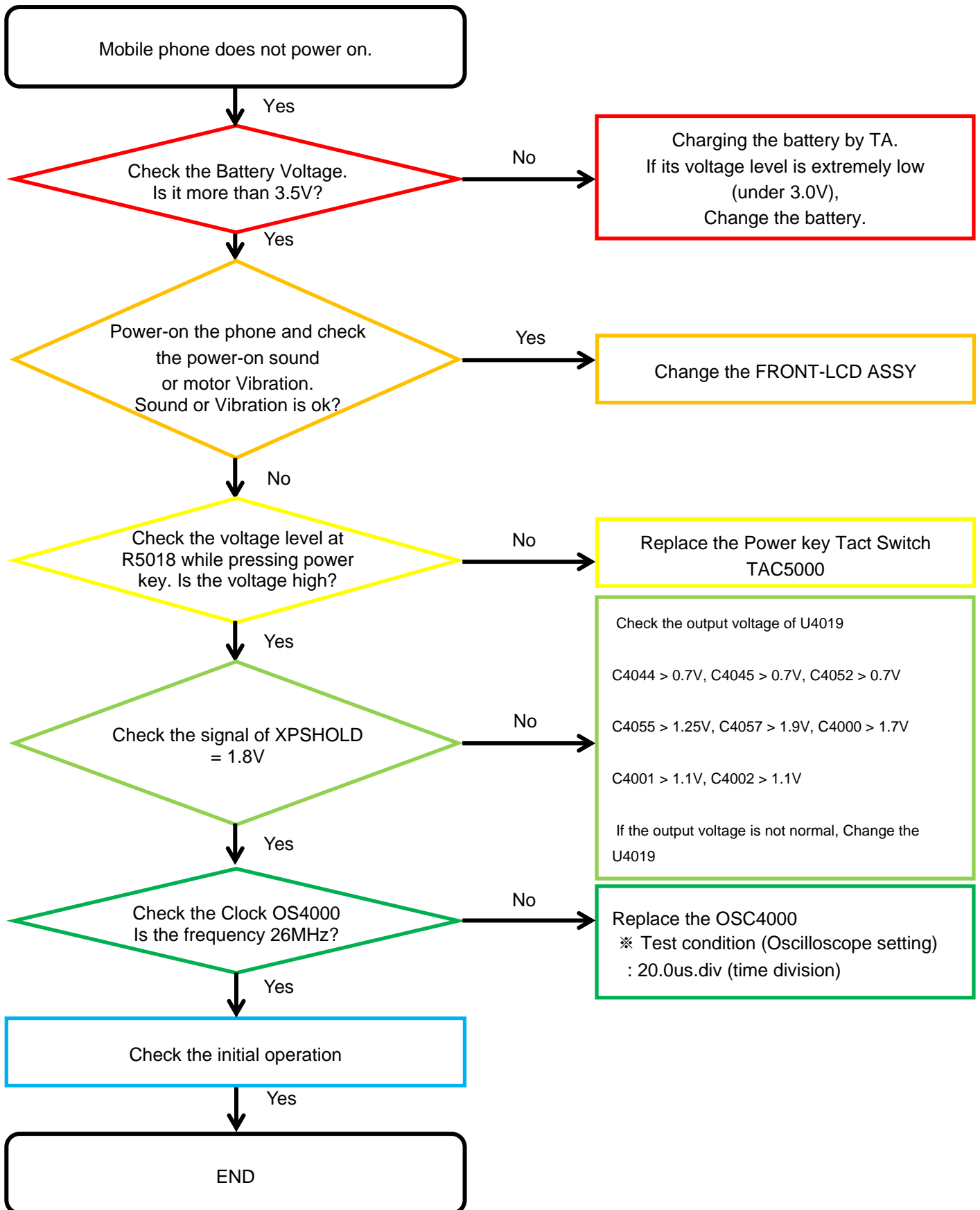
8960 & Spectrum Analyzer



Soldering iron

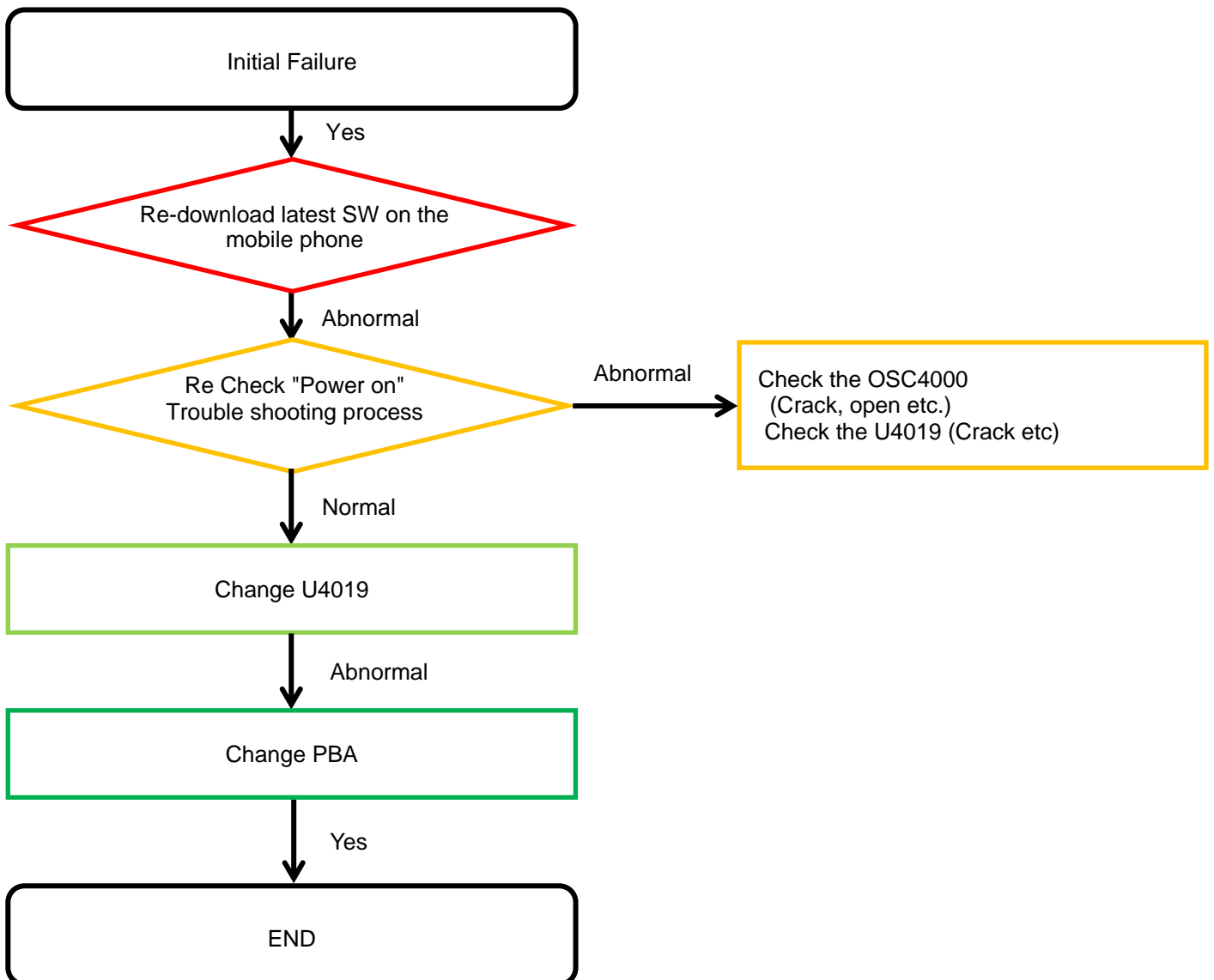
8. Level 3 Repair

8-4-1. Power On



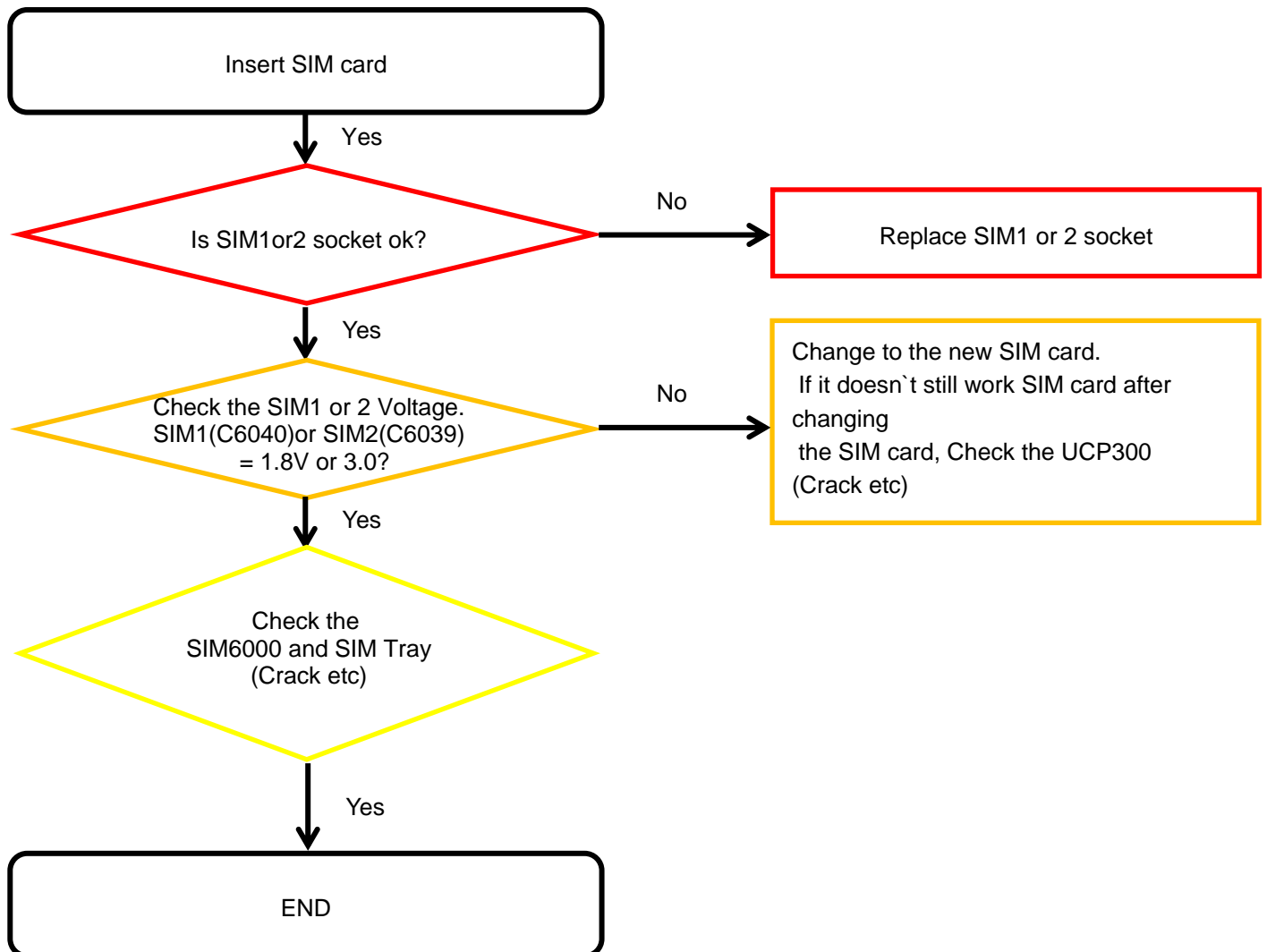
8. Level 3 Repair

8-4-2. Initial



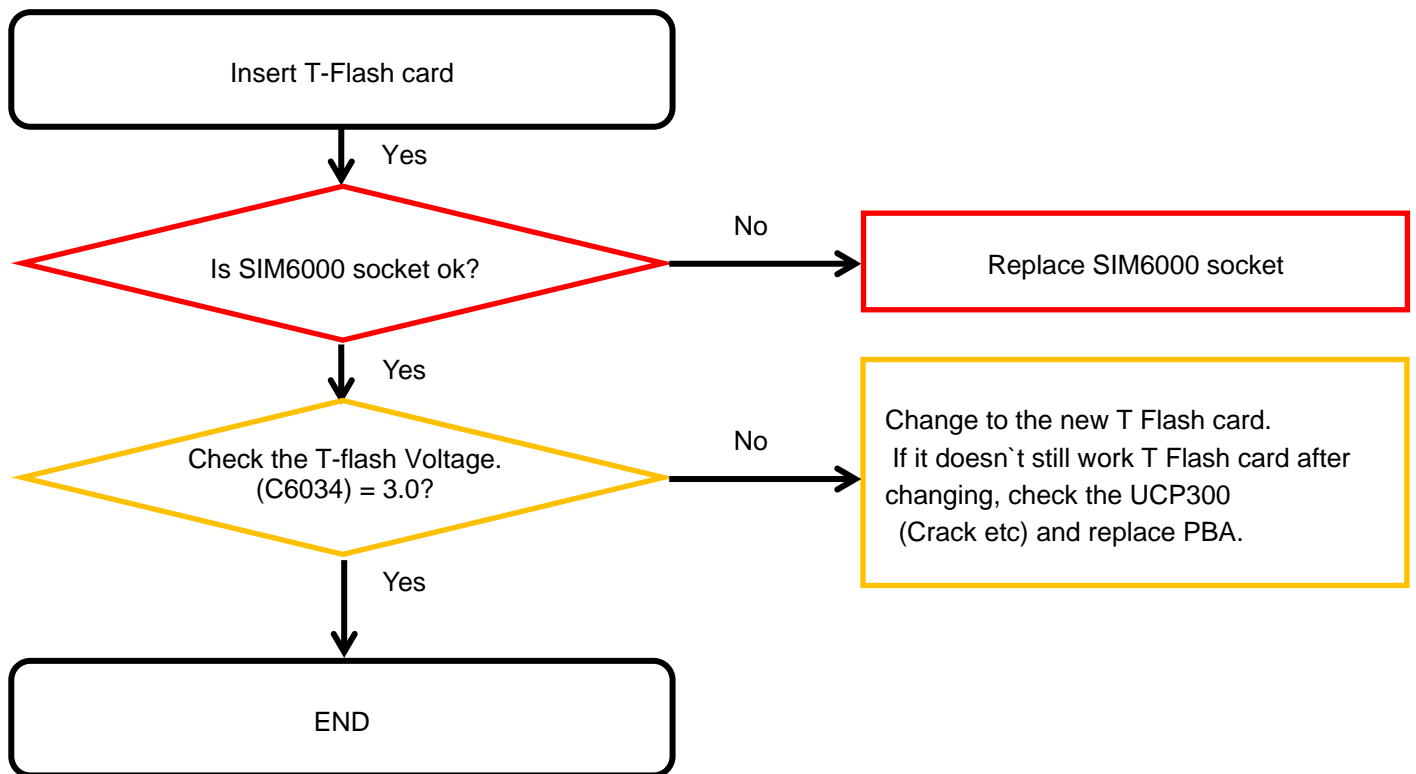
8. Level 3 Repair

8-4-3. SIM Part



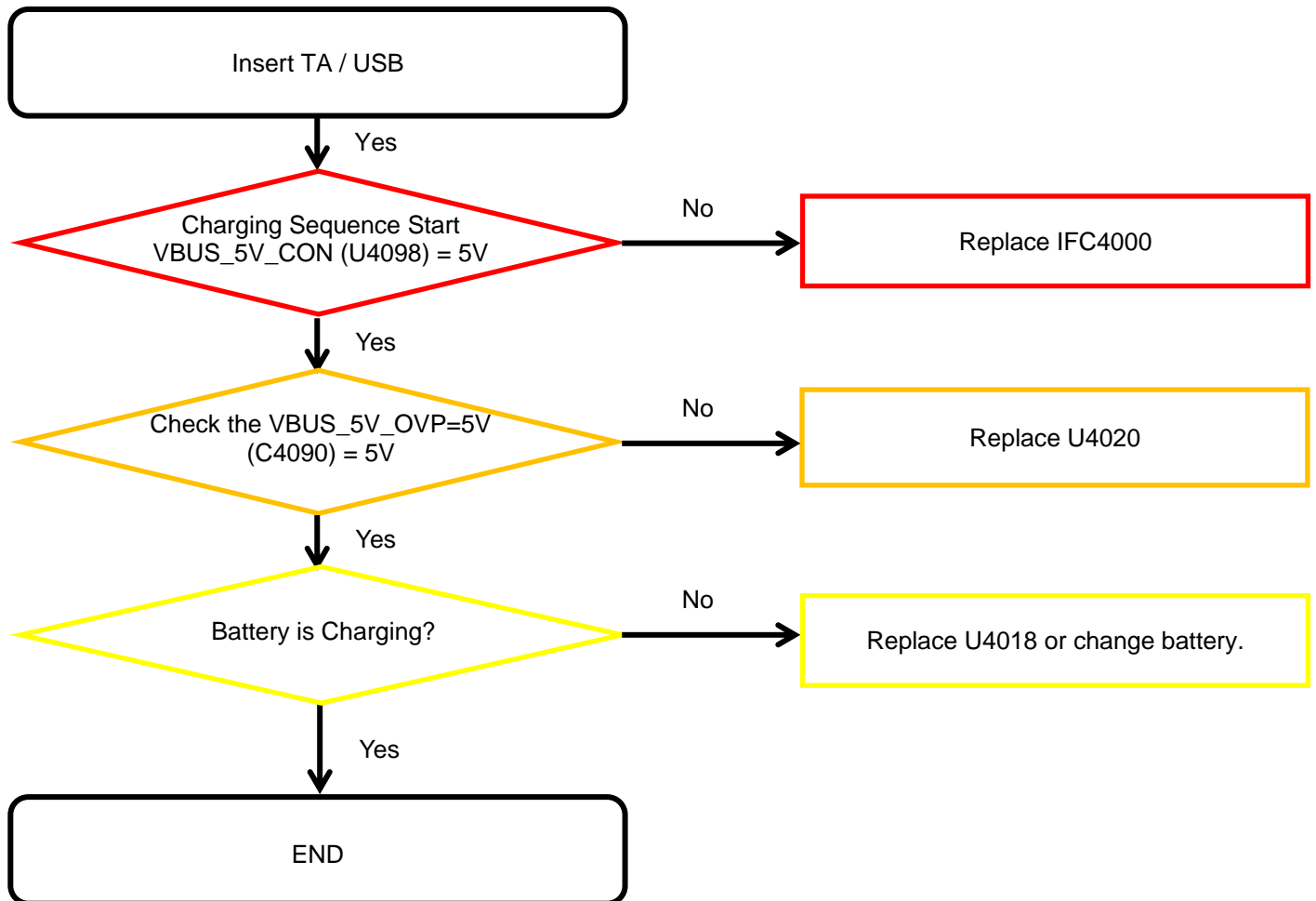
8. Level 3 Repair

8-4-4. T-Flash Part



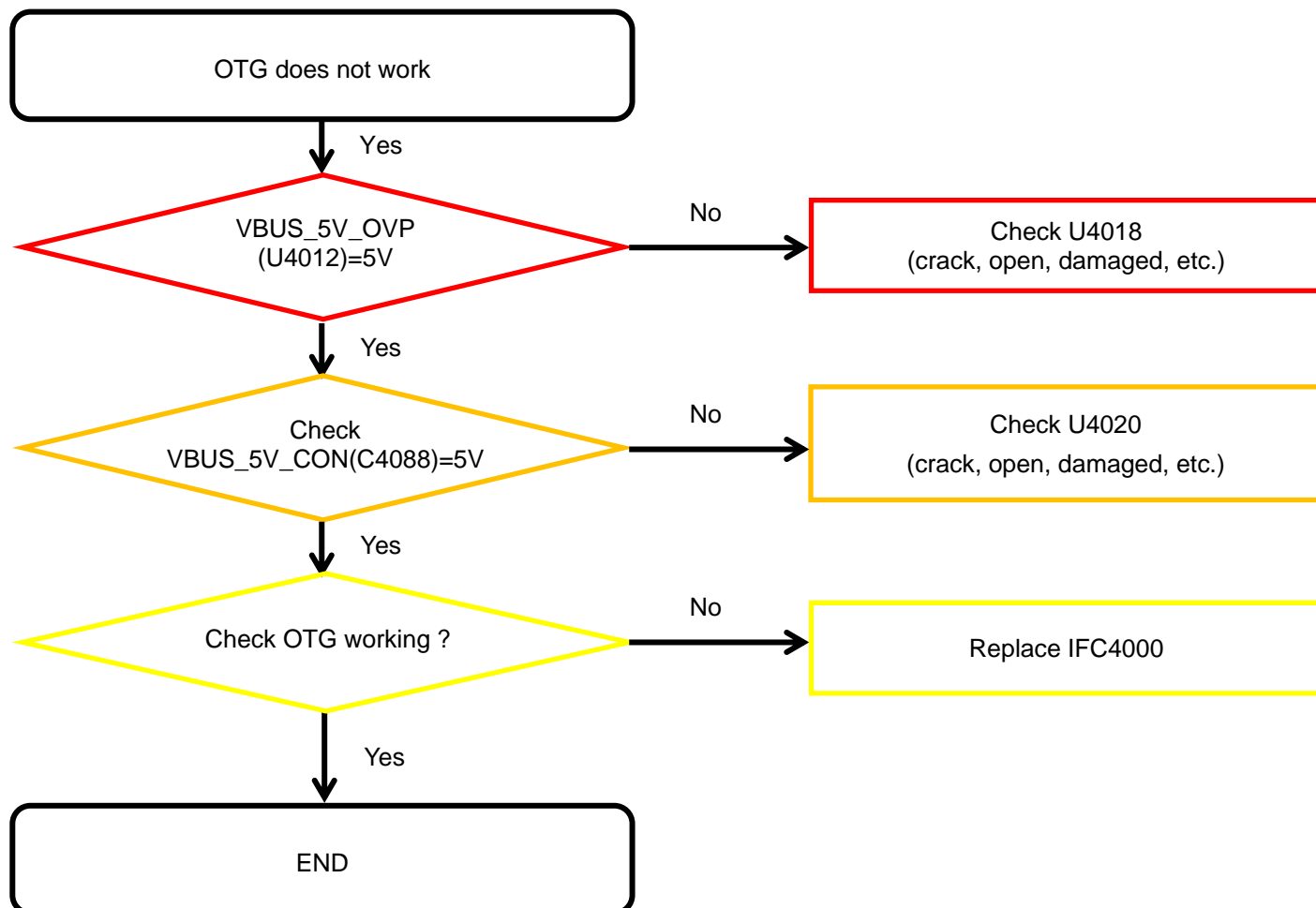
8. Level 3 Repair

8-4-5. Charging Part



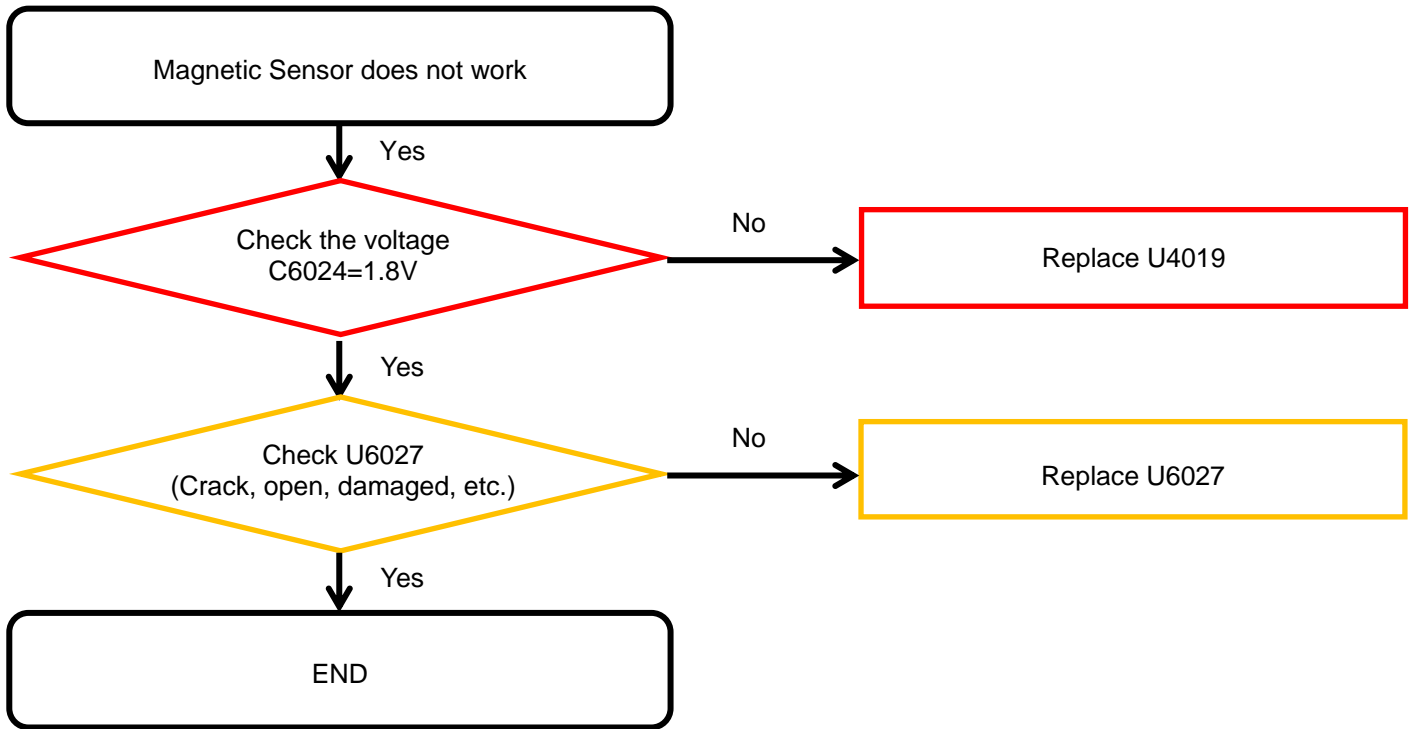
8. Level 3 Repair

8-4-6. OTG



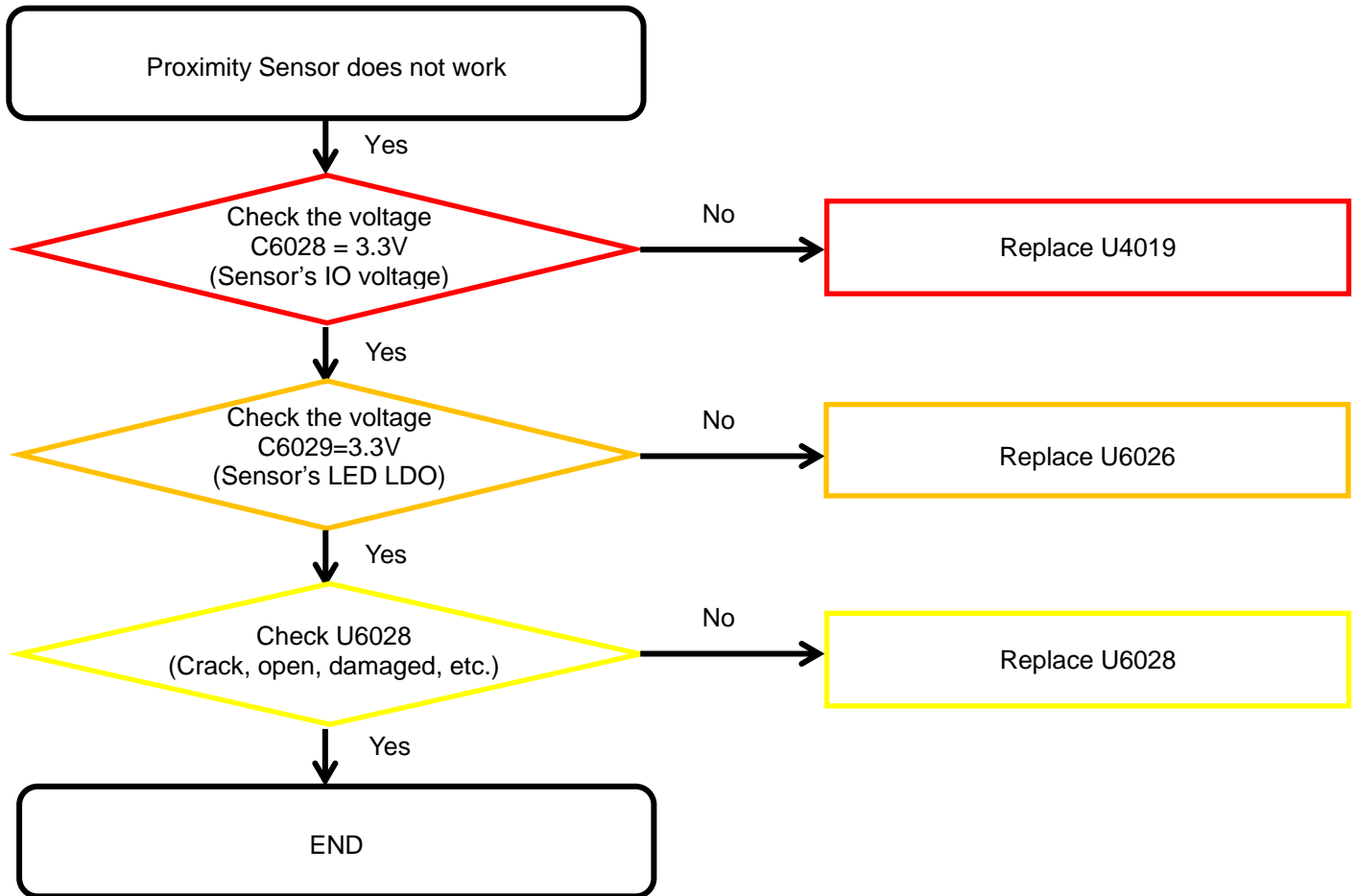
8. Level 3 Repair

8-4-7-1. Accel Sensor



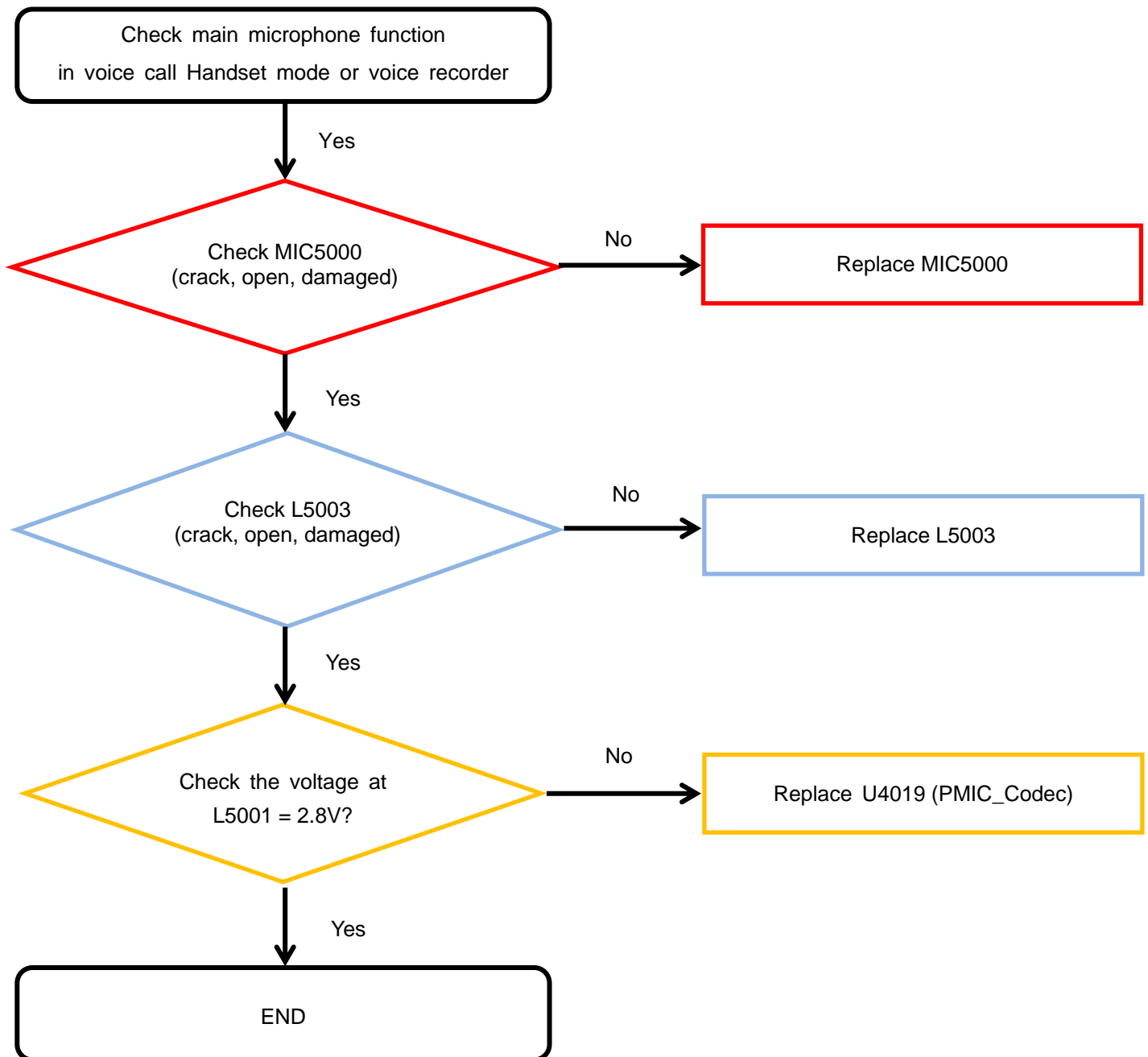
8. Level 3 Repair

8-4-7-2. Proximity sensor



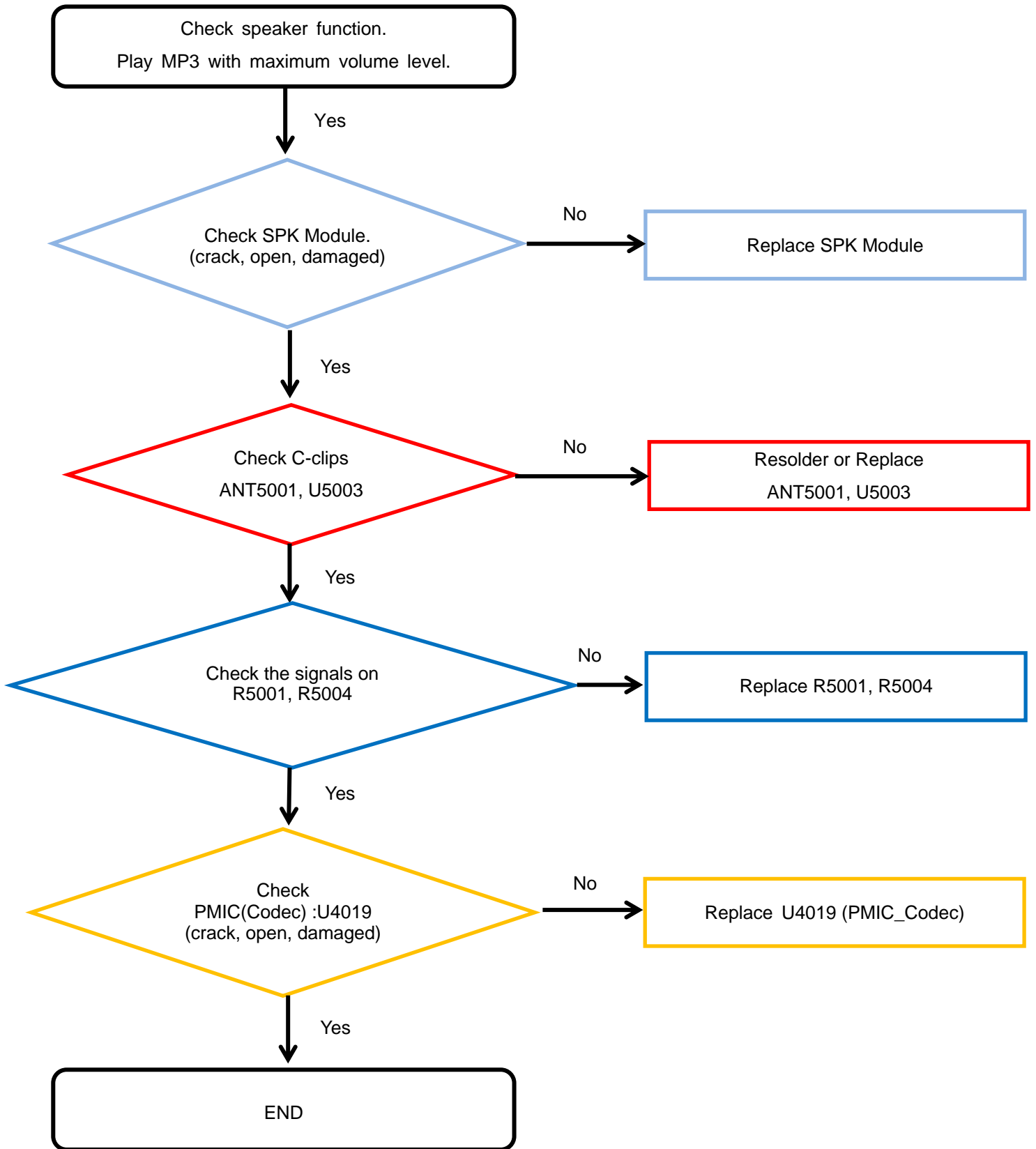
8. Level 3 Repair

8-4-8. Microphone Part - Main MIC



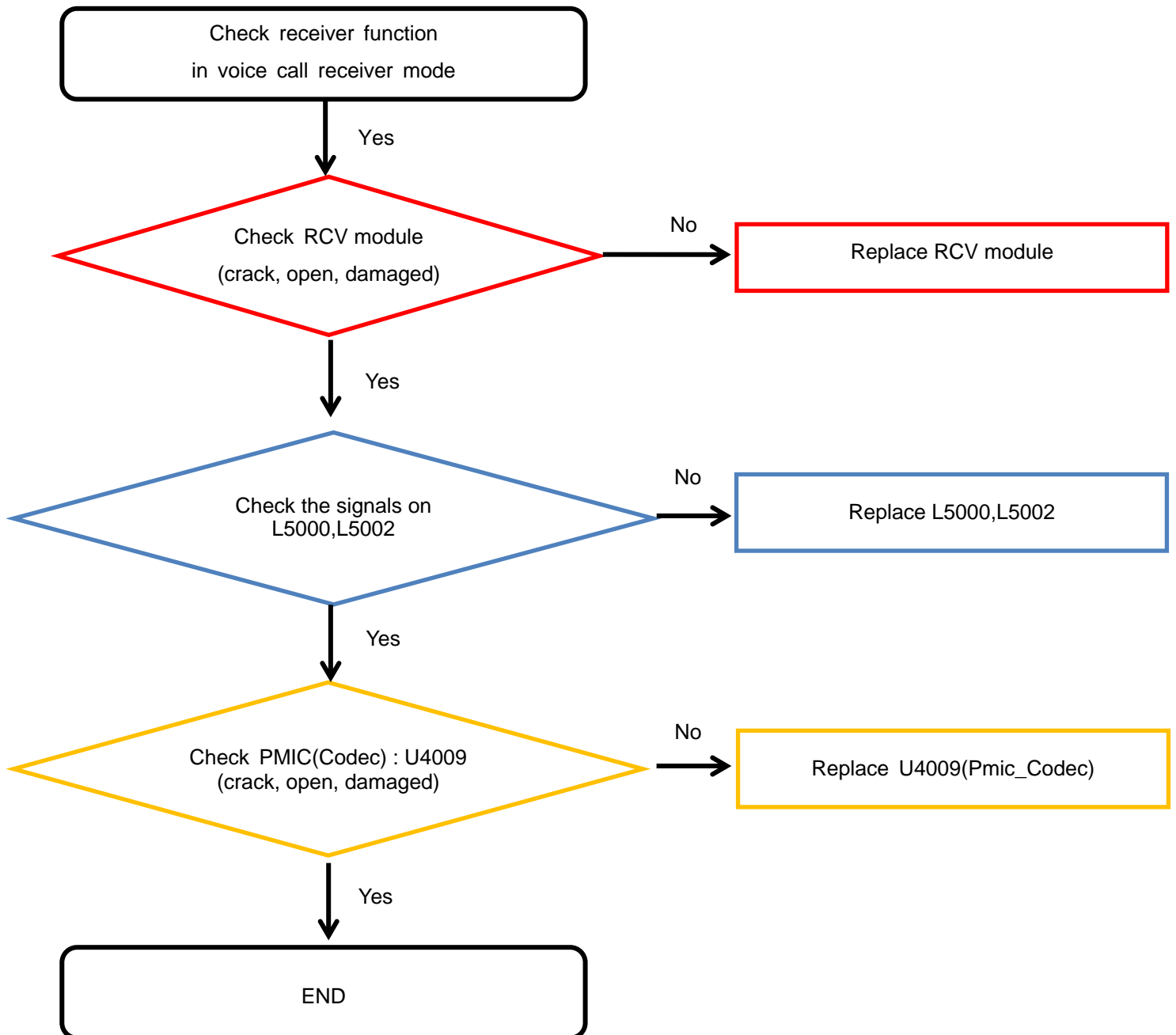
8. Level 3 Repair

8-4-9. Speaker Part



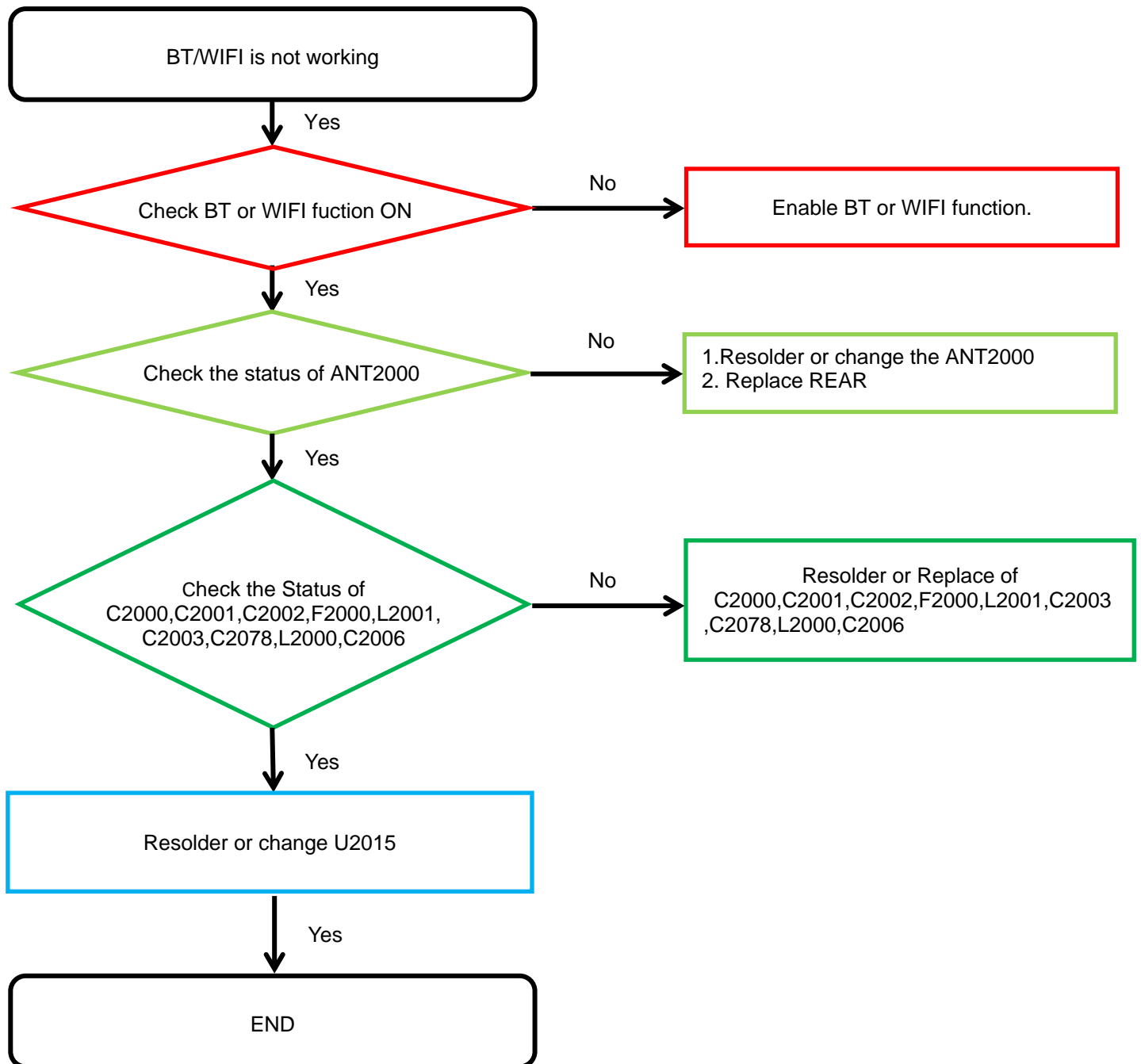
8. Level 3 Repair

8-4-10. Receiver Part



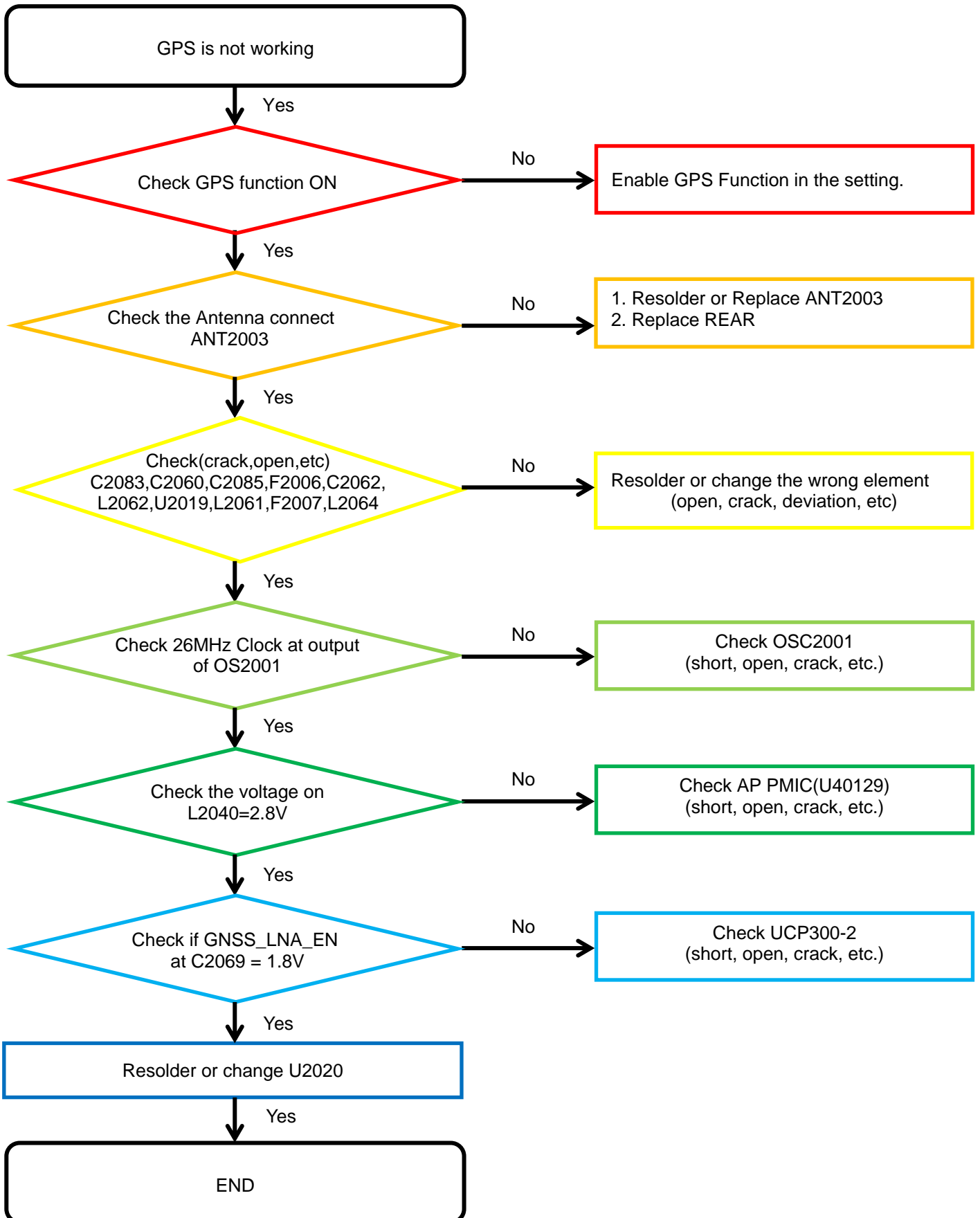
8. Level 3 Repair

8-4-11. BT/WIFI



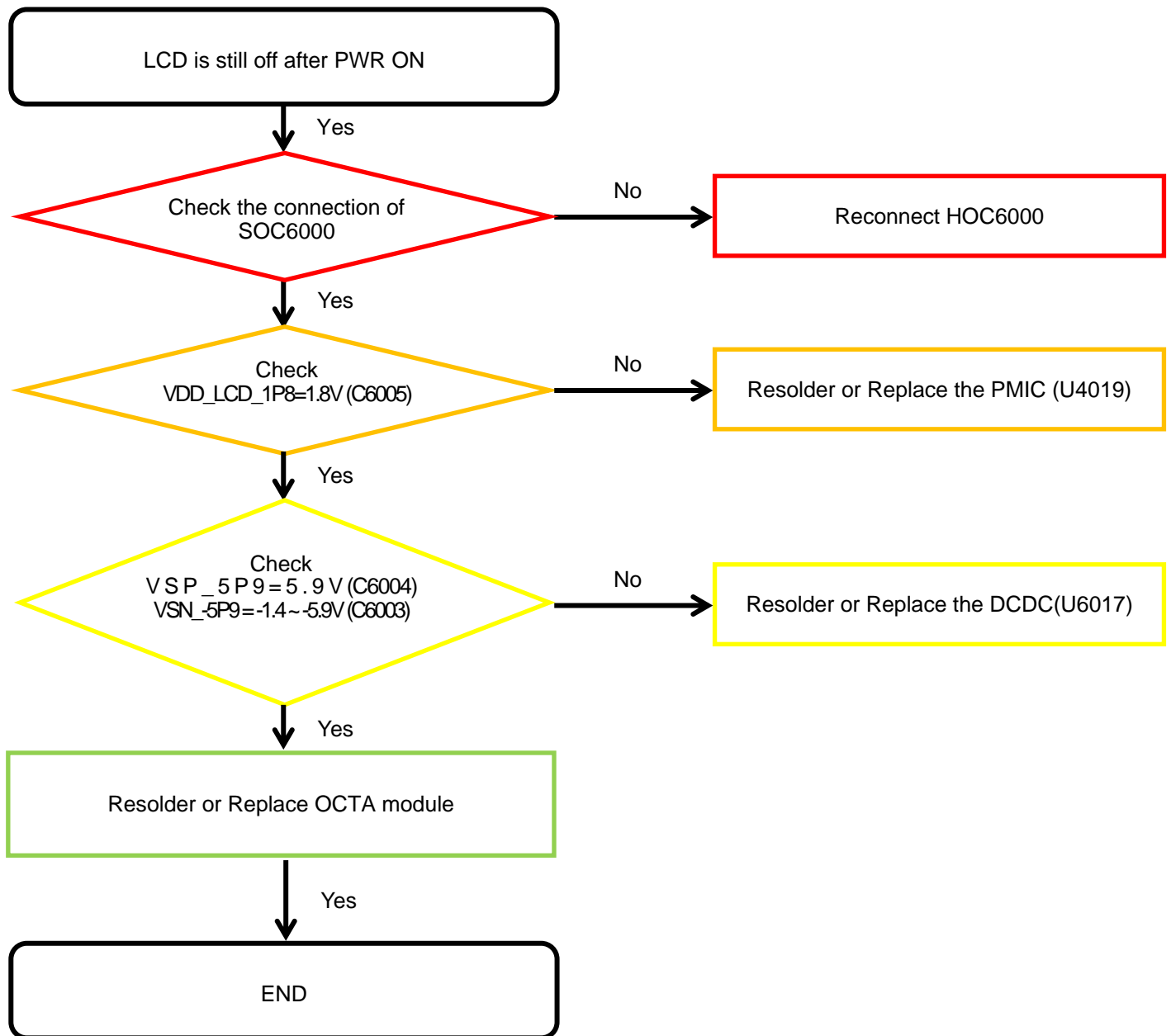
8. Level 3 Repair

8-4-12. GPS



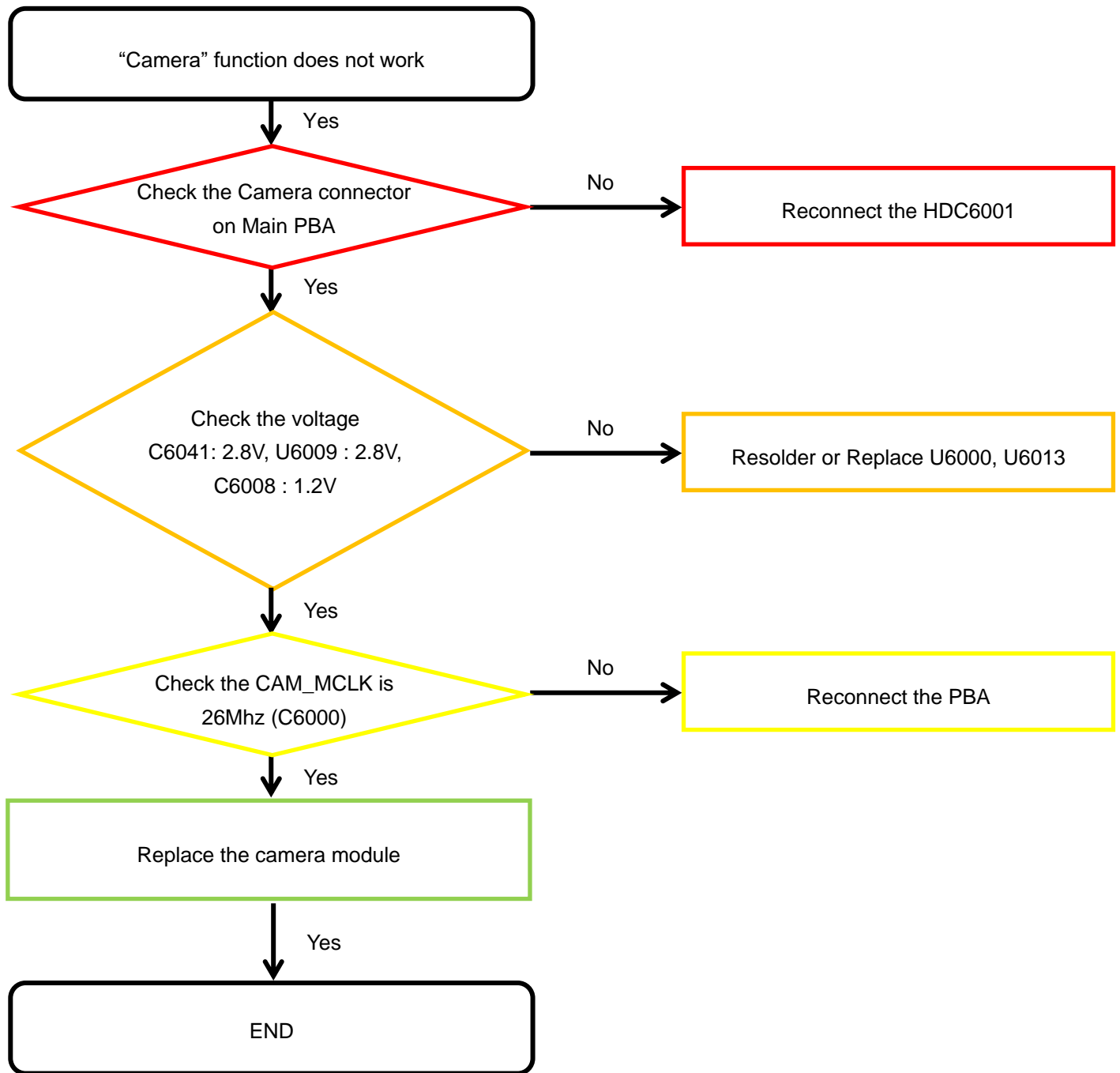
8. Level 3 Repair

8-4-13. Display



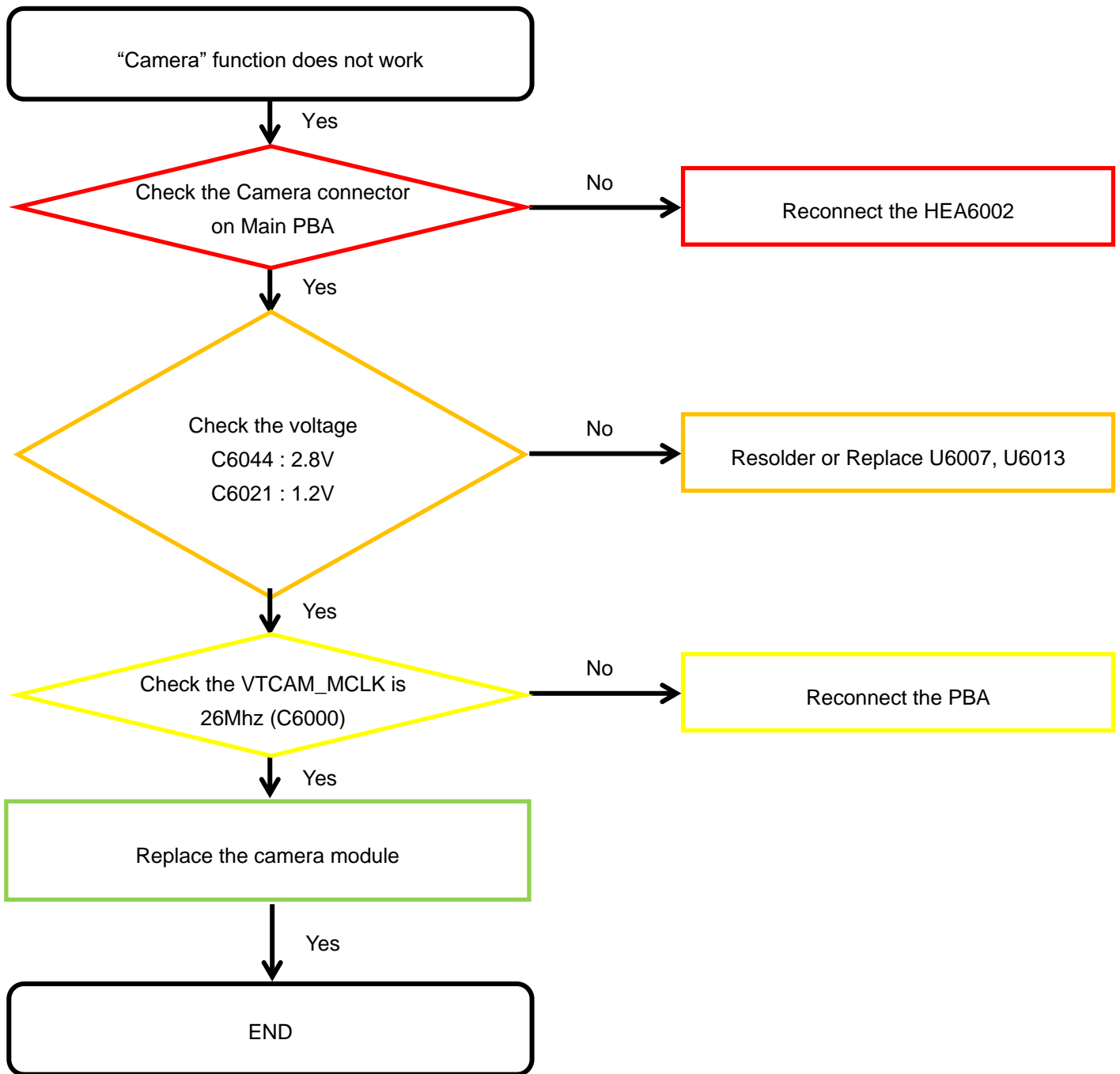
8. Level 3 Repair

8-4-14. Rear CAMERA



8. Level 3 Repair

8-4-15. Front CAMERA



8. Level 3 Repair

8-4-16. Motor

